

SIFAT-SIFAT FUNGSI SONGSANG

PROPERTIES OF INVERSE FUNCTIONS

Diberi f dan g ialah fungsi songsang antara satu sama lain.
 Given that f and g are inverse functions of each other.



$f(x)$

1

Fungsi f dan g ialah fungsi satu dengan satu.

Functions f and g are one-to-one functions.



2

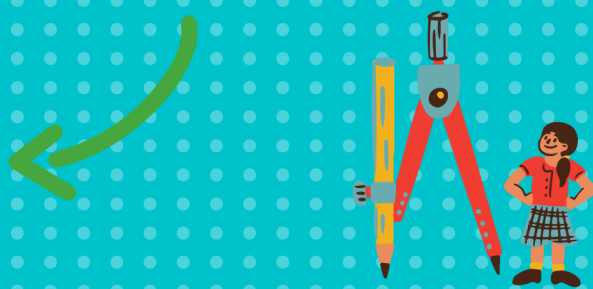
$fg(x) = x$, x dalam domain g dan
 $gf(x) = x$, x dalam domain f .

$fg(x) = x$, x in the domain of g and $gf(x) = x$, x in the domain of f .



3

Domain $f =$ julat g dan domain $g =$ julat f .
 Graf g adalah pantulan graf f pada garis $y = x$.
Domain of $f =$ range of g and domain of $g =$ range of f . Graph of g is the reflection of the graph of f at the line $y = x$.



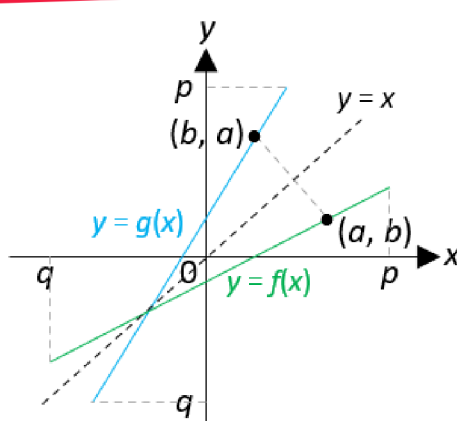
4

Jika titik (a, b) berada pada graf f , maka titik (b, a) berada pada graf g dan sebaliknya.
If point (a, b) lies on the graph f , then point (b, a) lies on the graph g and vice versa.



Contoh Example

Domain f ialah $q \leq x \leq p$
 Julat g ialah $q \leq g(x) \leq p$
The domain of f is $q \leq x \leq p$
The range of g is $q \leq g(x) \leq p$



$f(x)$